



## **COMMUNITY DEVELOPMENT ACTION PLAN 1<sup>st</sup> MONITORING REPORT**

**1<sup>st</sup> September to 30<sup>th</sup> November 2024**

**Written & Compiled by Henry Robert Vagg (HOD: Com. Dev. & Resettlement Depart)**



**DRONE VIEW OF COMPLETED RAP2 PHASE 4,5,6, 7 & 8 KIMBADU TOWN, NOVEMBER 2024.**

## CONTENTS

---

Site locality .....	3
Community Development Projects Supported Under CDAP .....	5
CDAP ITEM 5.1 Entrepreneurial Development (Focus Area 1) .....	5
CDAP ITEM 5.1.1 Agricultural Development .....	5
CDAP ITEM 5.1.3 Local procurement .....	8
CDAP ITEM 5.1.4: ADULT Educational Projects 2022. ....	8
SUPPORT TO Kimbadu Community Health Center: .....	9
CDAP ITEM 5.2.1.General. ....	9
Conclusions and recommendations – APPENDIX 1 .....	11
Figure 1: Koidu regional locality.....	3
Figure 2: Koidu diamond mine lease area.....	4
Figure 3: Agriculture .....	6
Figure 4: Women in Business, Market infrastructures and sustainability.....	7
Figure 5: Community access roads Rehabilitation .....	7
Table 1: Beacon coordinates demarcating perimeter of the Koidu mine .....	4
Table 3: Total Calculated CDAP support .....	10

## INTRODUCTION

---

The Koidu Diamond Mine, located within the Kono District of eastern Sierra Leone (**Figure**), hosts two diamond ferrous Kimberlite pipes and four diamondiferous Kimberlite dyke zones, along which four small blows or enlargements have been discovered.

As required by the Sierra Leone Environment Protection Agency Act (2008) (as amended in 2010) and Performance Standard #1 of the International Finance Corporation, Koidu are required to carry out Community Development Action Plan monitoring in compliance to operations as against CDAP objectives and targets. The results of monitoring to be reported to relevant regulatory authorities and accordingly this report presents the CDAP compliance monitoring data for the Koidu Diamond Mine from **1<sup>st</sup> September to 30<sup>th</sup> November 2024**.



FIGURE 1 REGIONAL LOCALITY

---

## SITE LOCALITY

The Koidu Kimberlite Project is located within the tropical rainforest belt of Sierra Leone. Sierra Leone is divided into four main administrative regions, each of which is subdivided into several districts, and each district is comprised of several chiefdoms.

The Koidu Kimberlite Project is situated within the Tankoro Chiefdom of the Kono District in the Eastern Province of Sierra Leone, approximately 2 km south of the district capital, Koidu (adjoining to the smaller town of Sefadu) and approximately 330 km east of Freetown, the capital city.

The current mining lease area (**Figure 2**) measures 4.9873 km<sup>2</sup> and is presented in (**Table 1**).

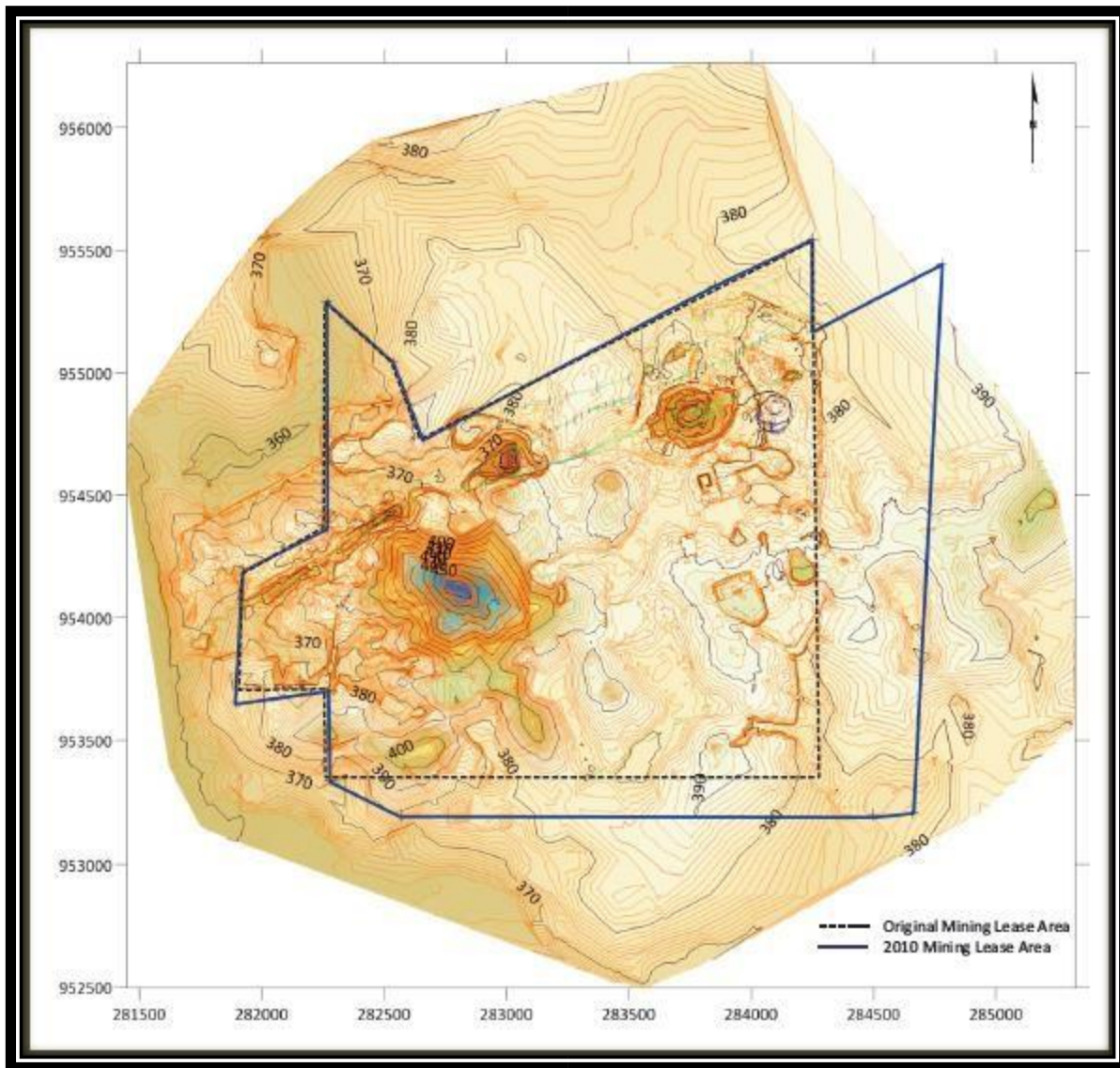


FIGURE 2: KOIDU DIAMOND MINE LEASE AREA



Beacon	Coordinates		WGS-84 UTM Zone
	X (m)	Y (m)	
1	282268	955286	29
2	282542	955042	29
3	282662	954725	29
4	283850	955350	29
5	284251	955540	29
6	284251	955165	29
7	284780	955440	29
8	284660	953210	29
9	284500	953200	29
10	282569	953198	29
11	282283	953340	29
12	282276	953701	29
13	281900	953650	29
14	281930	954195	29
15	282268	954363	29

TABLE 1: BEACON COORDINATES DEMARCATING PERIMETER OF THE KOIDU DIAMOND MINE

Due to the presence of alluvial diamonds, the surrounding areas have been subjected to extensive informal/artisanal mining activities in and around the adjacent flood plains and valleys.

#### COMMUNITY DEVELOPMENT PROJECTS SUPPORTED UNDER CDAP

The details of CDAP activities supported by Koidu and monitoring during **1<sup>st</sup> September to 30<sup>th</sup> November 2024 as 1<sup>st</sup> Quarterly yearly report in all the section below:**

#### CDAP ITEM 5.1 ENTREPRENEURIAL DEVELOPMENT (FOCUS AREA 1)

The entrepreneurial development initiatives identified through the local communities will be promoted in full when majority of RAP 2 have been resettled in their new places and available land have been allocated for the various components to be supported by the Chiefdom authority.

## CDAP ITEM 5.1.1 AGRICULTURAL DEVELOPMENT

---

### ***THE “VEGETABLE BASKET” PROJECT: On going project.***

The “**Vegetable Basket**” pilot project was set up within the compound of the Community Outreach office as a demonstration farm to be a visible, practical, and productive farm.

The demonstration garden is within the protected area of the community office compound and highlights the economical use of small land within any household.

The main advantage of having the demonstration farm in a secure area was being able to monitor and prevent outside interference both entomologically and human control.

This project can be implemented within the waterlogged swampy areas in the dry season after the rice season. All the harvested produce from the community office garden is supplied to Koidu Limited Monkey Hill kitchen for use.

The aim of this component is to assist the resettled households to embark on small to medium scale agricultural activities. Over **833 + 1** resettled families who are keen to grow vegetables at their new homes are encouraged to visit the Community Outreach office near Manjamandu primary school to collect available certified vegetable seeds to plant in their backyard garden.

House owners have the choice to plant/ grow vegetables as a backyard garden after they moved. They are encouraged to plant vegetables and fruit trees as part of Koidu Limited environmental educational support.

### **1st QUARTERLY UPDATE: 1<sup>st</sup> September to 30<sup>th</sup> November 2024:**

During the previous reporting period, Koidu Ltd made arrangement with the MAFFS to be a positive partner in the implementation of economical tree planting at the completed Resettlement old and new site of Kimbadu.

Over 3000 economical trees of Cashew nuts were delivered in August 2021 to Koidu Ltd community Development office and was distributed during the month of September 2021 to resettled households of Kimbadu. The distribution was implemented with the VRC /APOA and the affected chiefs of the area.

More economical trees from MAFFS of various varieties/ types for the mine concession reclaiming site and the APOA families was distributed in early April 2023 to families already in their new homes.

### **May 2024**

**A meeting was held between Koidu Ltd community staff and MAFF staff in mid-May 2024 to investigate the possibility of setting up a (GRSAP) grass root school agriculture pilot project within Koidu city.**

**MAFF has prepared and submit a concept project proposal for discussion to kick start as soon as possible.**

**The pilot project concept proposal documents have been submitted from MAFF and is presently under discussion by Koidu Ltd.**

**We are planning presently for the collection of more seedlings including Lemon, Lime, Cashew, mangos, and Pears from the MAFFS in the raining season when available.**

### ***GARDEN SHED/TUNNEL:***

The “**Vegetable Basket**” garden concept transformed in January 2015 into a protected garden shed/tunnel to the community office compound has been in use since late 2017. This system can be adopted and built by any keen gardener by using locally available material like bamboo, sticks and cheap nettings at low cost as a backyard income generation garden.



**Figure 3: Showing older town of Kimbadu with mature economical trees and newly completed resettlement town of New England awaiting the distribution of economical trees with support from MAFF. as part of our reforestation and lively hood sustainability to our communities .**

### ***ITEM 5.1.2, WOMEN IN BUSINESS: NEW OPEN MARKET WITH 38 LOCKED UP STORE AT KIMBADU SITE.***

KL has been actively committed to enhancing and aiding local women’s initiatives especially in the service area where the mine can benefit. *This component can only be fully established once most of the resettlement components are in place to identify the markets and required services in demand.*

Koidu Ltd has over the past four years been doing reclamation of a swampy land area for use as an open space weekly trade/ market (Loma) where traders /farm produce will be sold to the public. The construction work started in 2020, and progress has been slow due to material supply constrain and was completed by end of 2022. The building plan was approved by the main stakeholders /affected community.

The main building structure comprises of 38 separate stores spaces with water well, water storage tower and tanks facility, 3 toilets units for male and 3 for females. The top floor level has four W.C. flush toilets with wash hands basins facilities.

The whole structure has been electrically wired for individual electrical supply meters and metal doors/shutters for security and access between structure for delivery vans/trucks.

The back compound/reclaimed land when completed will have enough open space to accommodate <sup>over</sup> 48 roofed stalls with concrete floors for normal weekly traditional Loma trading market for selling agriculture produce from the surrounding villages and towns.

The market was partially handed over to be under the direct ownership of the Tankoro Chiefdom and KNSCC. **The handing over was done on the 6<sup>th</sup> January 2023 to the stakeholders at the Kimbadu Resettlement. The market is partially in use by the community under VRC & KNSCC Assets management committee. The market is presently in use with most of the main store buildings rented out and in use.**



Presently most of the resettled communities under RAP 1 & RAP new site have established hair dressing salons, market Stalls, cooked food centres (cookerie shop) soft drinks & bars, dressmaking shops and video club centres. These are being established by the individuals when and as demands are identified.



**Figure 4: Koidu Ltd completed box culverts at Sundu Bar junction & UMC -Bengasy road Sep -Oct. 2024.**



**FIGURE 5: Supply of wooden pallets to 9<sup>th</sup> Battalion in Koidu and building construction material support to PIH/BHI New Maternal building at KGH in Koidu city October 2024**

### **CDAP ITEM 5.1.3 Local content Policy**

K.L. still endeavour obeying the local content policy in enhancing the growth in the local businesses by extending business opportunities to the local petty trader and small, medium, and large enterprises especially in Koidu through local purchases.

The Company buys most of the vegetables, fruits, dried fish, eggs, bread, timber produce and imported goods from both the local small and bigger shops for the workers and expats kitchen within the mine.

The local food contractor employs at any month over 30 locals for the preparation of food for over 1000 Koidu Limited National workers. The Monkey hill kitchen for expats is run by the national staff and all food stuff prepared on site.



K.L. encourages the construction contractors to buy most of the building materials required for RAP2 houses from the local market and Freetown as well as employment of over **1000** skill and unskilled workers.

**We now have 47 local contractors with 95 % from Kono district and the 5 % from other districts in 2024 to try to complete the outstanding 47 + houses RAP2, Phase 8 as part of our Local content policy.**

**All the remaining 47 outstanding houses has now been signed for by our host Hon. P. C. Paul N. Saquee to be contracted out for construction work to start once the allocated land has been cleared and demarcated to complete the resettlement program.**

**The required land has been allocated and given to Koidu Ltd to complete the RAP2 with only the remaining infrastructures of 6 classroom primary school, a health post, a football field and a children nursery.**

#### **CREATING EMPLOYMENT & ON THE JOB TRAINING.**

***KL has created local job opportunity for the people of Kono as part of its local content objective in contracting out the construction of the RAP 2 resettlement houses of over 880 structures to 47 local contractors within Tankoro / Gbense chieftdom and Kono district.***

*These local contractors through their own recruitment are offering “on the job training” for the unskilled labour force. Those trained are benefiting the construction trade and improves the living standard of the uneducated youth from the district.*

#### **RAP1 (2008-2011): 371 houses (completed in 2011).**

Most skilled and unskilled workers are employed from the community of Tankoro /Koidu as most have been trained under the previous RAP 1 resettlement programme for the construction **371** houses **2008-2011**.

#### **WATER WELLS WITH HAND PUMPS: 121 new ,111 completed.**

The total water well to be built was **121** and 111 contracted out has been completed with 10 outstanding to be dug and completed by 2023. This 121 will cover the RAP2 site and supply clean drinkable water to the APOA communities. We will have to do more bore holes wells due to the nature of the present site conditions.

A total of 111 hand dug water wells with hand pumps has been completed with installation and more old water wells was contracted out for repairs and rehabilitation to date in 2023 -2024.

**We contracted out 29 old water wells to contractors in January & February 2024 for rehabilitation due to the serious drop in water tables in most of the resettled areas in all the districts.**

*The completed water wells will be officially handed over by the **Honourable Paramount Chief Paul Ngabar Saquee V.** when the completed houses are handed over and occupied. An area /sector water committee will be set up by the APOA and will monitor the water usage especially during the dry season and assist with the basic daily maintenance. This sector committee takes ownership of the water wells.*



**Figure 6: Drone view of Resettlement and access road's rehabilitated since July to Nov. 2024.**

**SCHOLARSHIP AWARD FUNDS: TECH-VOC 500 & 38 TERTIARY = 538 TOTAL BENEFICIARIES.**

***40% of the \$40,000.00 allocated for school levers scholarship award has been allocated for the continuation of Tertiary students \$16,000.00 and \$24,000.00 to the support for Technical -Vocational school levers training since 2020 academic years. This decision is in line with policy to support both technical -Vocational and Tertiaries students.***

**The 2023 awards to the 19 tertiary students have been paid direct to the institutions.**

**The final release for 2022-2023 Tech/Voc.341 Students was finally released for payment after confirmation of the list from both institutions in December 2023.**

**Total of 360 students from both higher tertiary and tech/voc. benefitted from Koidu scholarship awards in 2023.**

**We completed the verification and released scholarship support for the 500 Tech-Voc. in 2024 students from the two GTI in Koidu city and official scholarship award payments has been paid mid-August 2024.**

**We have since October verified 38 tertiary students in various Government university institutes and payment will be released in November 2024.**

**Koidu Ltd is still supporting the Tertiary students as well as the TECH/VOC students within the 40% funds allocated as per lease agreement.**

---

**SUPPORT TO KIMBADU COMMUNITY HEALTH CENTER:**

---

This project entailed the upgrading of the old CHU (Community health Unit) building from the resettled village of Swarrytown now enclosed in the concession. The health centre has both male and female observation room, a maternity ward with two separate observation /rest room. There are two internal W.C. and shower facilities for male and female, laboratory/test room, two separate medical consultation room

for the health officers. Each of the 12 rooms has a hand wash basin and the medical store has air-conditioning unit to keep the cold chain drugs safe. There are two three units outside public toilets for use, there is an incinerator for the disposal of used items.

The pipe water supply from the main bore hole operated by KL for the resettlement use can become erratic due to the high demand for water from outside the resettlement area. The CHC provides health supports to over 3,000 individuals from Kimbadu and twice that number from the immediate villages settlement communities. This population is now increasing as the resettlement grows due to the clean environment and the service attracts new tenants. Water wells has been installed to supplement demand. The staffs at this CHC are employed and all medicines are supplied and paid by MOH through KGH. Koidu Ltd paid for the connection to the main power grid in February 2019 for constant supply of electricity, which is cheaper, environmentally cleaner, and easy to manage by the MOH who pays the bill.

#### **NEW FACILITIES: PHASE 6, 7 & 8 SITE:**

*Koidu Ltd had planned to start building a new PHU at the new site when Phase 6 & 7 is being implemented in 2024 as part of our CDAP service to compliment the RAP2. This project has been delayed to 2024 with 6 classroom primary school and a playing field.*

**The two old staff Kimbadu accommodation were to be rehabilitated in 2024 but has been put on hold till 2025 as part of Koidu Ltd CDAP support.**

**Koidu ltd is planning to build a “Day care centre” at the resettlement area as part of its support to working women and this will now be built in 2025 program.**

---

#### **CDAP ITEMS 5.2.1 GENERAL.**

---

Koidu Limited has during this **1<sup>st</sup> Quarterly reporting period of 1<sup>st</sup> September to 30<sup>th</sup> November 2024** has supported some government institutions and individuals within the Primary Host Community of Koidu Ltd Kono in general. KL under this component has assisted in various community rehabilitation/repairs work and in-kind support within the last 14 years and this support is still being provided where and when there is a request /need.

KL continues allow the collection of waste granite from the outside dump by the Tankoro Granite Breakers Association for hand breaking for sale to the construction industry and local rural roads contractors. These women make a sustainable living through this project and pays for their children school fees, medicals, and food as part of our women empowerment.

- † Recycling of our scrap metal and with cash generated used for community projects through the Tankoro Native Administration (T.N.A). This component is active and under the supervision of the Tankoro By - Products committee and is self- monitored by the chieftdom authorities.
- † Waste food from the mine two kitchens is taken out by our pickup vehicle and distributed to five separate Pig farms within Koidu city. This is a daily contribution (supply quantity is based on food not eaten, as KL is not in the business to waste food) to the community pig farmers as part of the sustainable lively hold component.
- † Monthly supply of 2460 litres of diesel fuel to the KNSCC for the GOSL educational school bus program in Koidu city as part of the CDAP for school and educational assistance.



- † Supply of Aluminium cans, empty bottles, and metal cans for recycling into pots, bottling liquids and making small household items to sell. This is CSR.
- † Assistance with 350 litres of diesel fuel monthly support to the KNSCC for waste management and garbage collection program in the city. Part of CDAP support
- † Monthly funds contribution for VRC meetings. CDAP support.
- † Construction of the new Women community Hall with basement accommodation facility in Tankoro chiefdom. Completed and officially handed over on 3<sup>rd</sup> February 2024.
- † **Cleaning/ grading of access roads in the community September – November 2024. CDAP.**
- † **Supply of 6600 litres of fuel per month to the KGH for field ambulance monitoring support.**
- † **Supply of 100 tons of crushed granite aggregates for construction work at the PIH/BHI Maternal unit at the KGH.**

## CONCLUSIONS AND RECOMMENDATIONS – APPENDIX 1

Item	Cost
General support – Grading of roads, Scrap, waste food, drums & cans, VRC, and support to KNSCC waste, Fuel supply for school buses, KGH and others as listed.	\$188,829.25
<b>Total CDAP Support for 1<sup>st</sup> Quarterly September to November 2024</b>	<b>\$188,829.25</b>

**Table 2: Total CDAP Support for 1<sup>st</sup> Quarterly September to November 2024. \$ 188,829.25**

CDAP support has continued through the 1<sup>st</sup> Quarter from September to November 2024 and the monitoring of these projects has been portrayed in this quarter CDAP Monitoring report leading to an Annual CDAP Monitoring report.

Continuous community assistance and implementation of the RAP 2 is having a positive impact on the community through the increase in opening and start of small tack shops/ video clubs, pharmacies, building/construction material shops and cookery shops at the construction site and the already completed housing area. A new Loma market under construction at the resettlement site has been completed and handed over on the 6<sup>th</sup>. January 2023 officially to the stake holders.

### **Women Resource Centre & Other request:**

A new women resource centre has been constructed at Kania Junction (Kissibona) after site was officially handed over on the 21<sup>st</sup> c July 2022. Includes.

The completed project was finally handed over on the 3<sup>rd</sup>. February 2024 with complete furniture and sound systems.

Sporadic requests from the community are considered and continuous support with tailings, granite, road maintenance and other projects will be in the order of the day.

The support to the security agencies is to assist them in implementing their mandated policies and reduce the crime rate within our community.

#### **UPDATE OF CDAP 2022-2026.**

CDAP 2022-2026 update has been completed and was submitted to EPA for final checks and has been approved for presentation to the host community for 2022-2026 implementation. The survey and final document of the new CDAP was undertaken by nominated and accredited consulting Sierra Leone company. The completed and signed document has been distributed to the main stake holder Paramount chief to be distributed to the various stake holders for the selection of the steering committee.